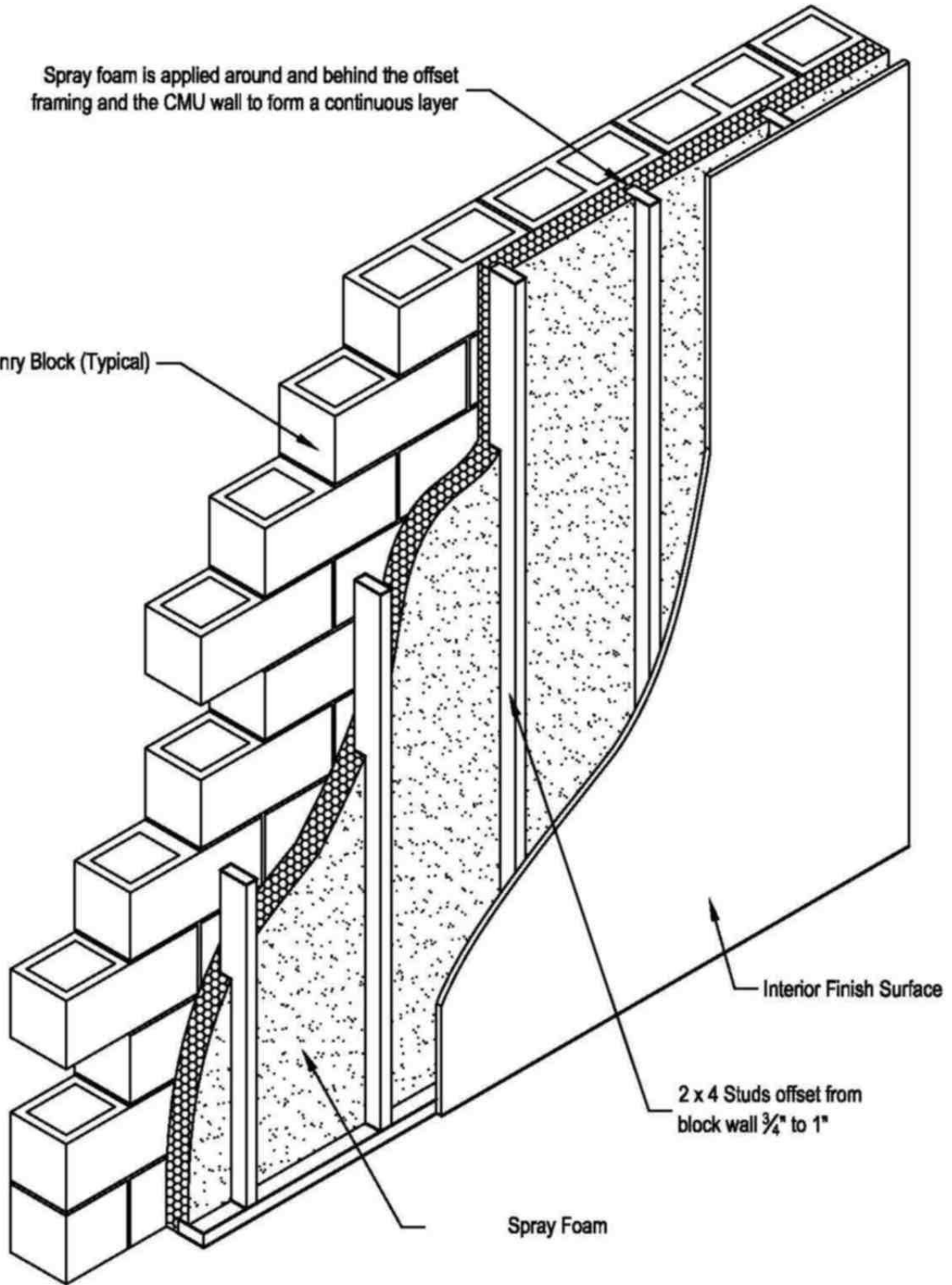


Spray foam is applied around and behind the offset framing and the CMU wall to form a continuous layer

Masonry Block (Typical)



Interior Finish Surface

2 x 4 Studs offset from
block wall $\frac{3}{4}$ " to 1"

Spray Foam

Profoam

Basement Insulation

Finished Basement Wall with Offset Studs

Dwg. # 11

These details are intended for use by design professional and users of Profoam systems to assist in developing project specific details. They should be modified where necessary to accommodate specific project conditions. Final details and specification must be approved by a licensed professional.

1-26-13